

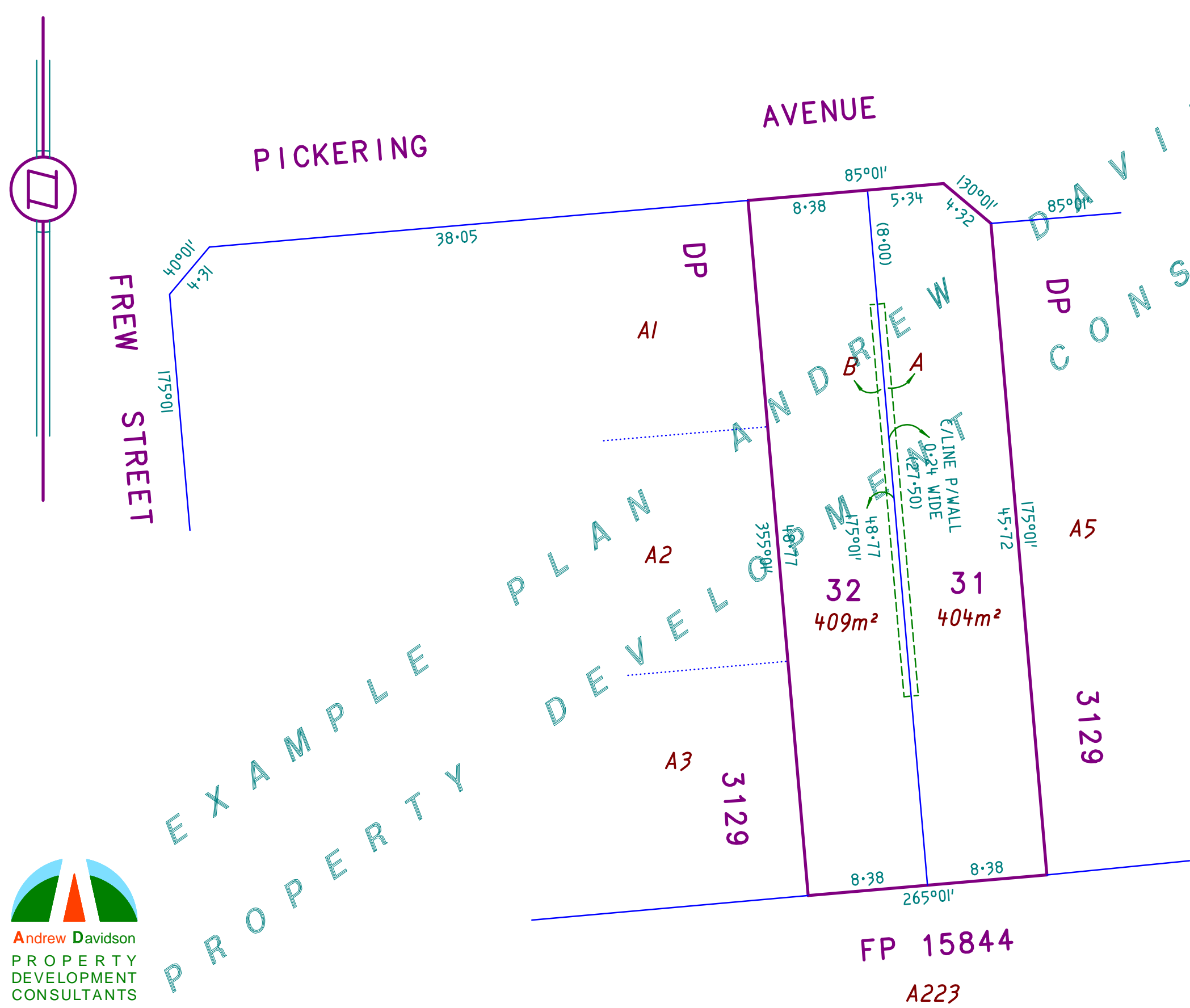
DEV. No. <b>090/D000/03</b>	
MAP REF. 6628-49-B	
TITLE SYSTEM REAL PROPERTY ACT	DSA —
TITLE REFERENCE CT VOL. 5000 FOL. 501	
O.B./LAST PLAN REF. —	TOTAL AREA 813m <sup>2</sup>
IRRIGATION AREA —	DIVISION —
HUNDRED	<b>ADELAIDE</b>
TOWNSHIP/AREA	<b>FULLARTON</b>
COUNCIL	<b>CITY OF UNLEY</b>
<b>PLAN OF DIVISION</b>	
<b>ALLOTMENT 4 IN DP 5000</b>	
SCALE	
0 3 6 12 18 24 30 METRES	

STATEMENTS CONCERNING EASEMENTS ANNOTATIONS & AMENDMENTS

This land division implements boundaries for approved land use application No. 090/00295/03/DX for two semi-detached dwellings.

Reciprocal party wall rights are to be created over those portions marked A and B.

Data is approximate and subject to survey.



**Andrew Davidson**  
PROPERTY DEVELOPMENT CONSULTANTS  
PO Box 654  
Glenside SA 5065  
T 08 8390 0099  
F 08 8390 0066  
admin@andrewdavidson.com.au  
www.andrewdavidson.com.au  
ACN 007 904 396

LEGEND	
DIRECTION CHANGE	(20.32)
PART DISTANCES	20.85 CALC
CALCULATED DATA	100:85
COPIED DATA	

ALL DISTANCES ARE HORIZONTAL DISTANCES	
COMBINED SCALE FACTOR —	ZONE — AMG —
BEARING DATUM —	DISTANCE —
DERIVED FROM DP 48673	